

# CHANGE THE WAY YOU LOOK AT DATA

# VIEWLOG

## CAD/GIS MAPPING

Multi-layer CAD drawing capability with polylines, text, and embedded air-photos.

## CROSS SECTIONS

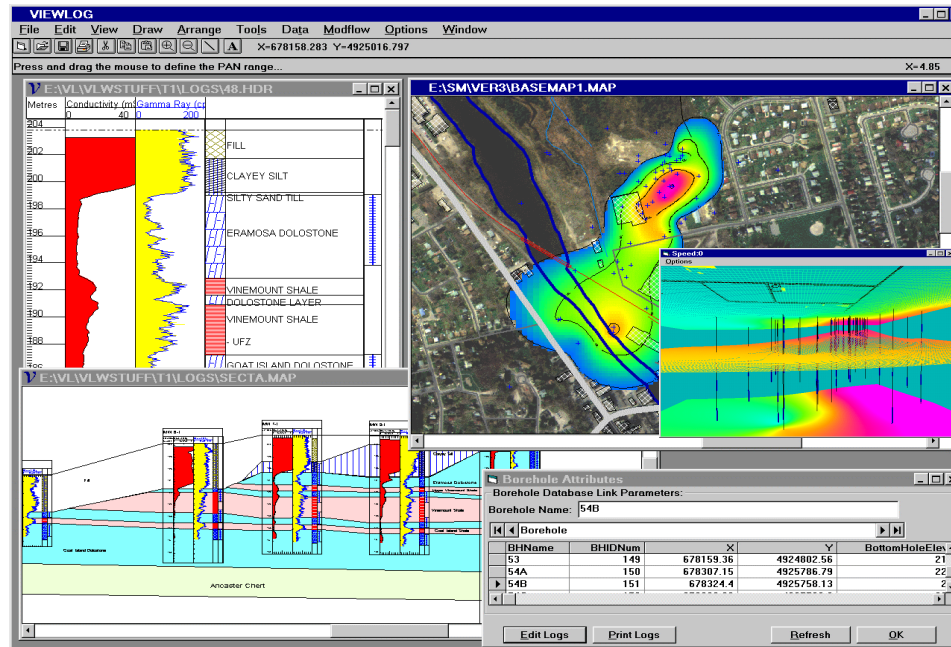
**Finally**, a cross section tool that lets you add discontinuous units! Includes on-section unit picking, section contouring, GIS well selection and editing.

## OPEN DATABASE

Store only one copy of each field measurement! Open design allows full user customization of database. Direct data mapping from MS-Access, Oracle, SQLServer or even Excel!

## GIS FOR GEOLOGISTS

Click on a well to view/edit any measurement in a grid window, or click the grid to locate the well on the map. Includes Find, Sort, and Filter functions, GIS-style polygon attribute management, Arcview and Mapinfo compatibility.



Tired of trying to make your CAD, Contouring, GIS, Spreadsheet and Borehole Log programs work together?

Bring your data together in VIEWLOG for:

- Improved, integrated interpretation
- Faster, more efficient data management and workflow
- Better error checking and fewer revisions
- Powerful visual presentation

## LOG EDITOR

Integrate and edit core description, lithology symbols, geophysical logs and core photos.

## INTERACTIVE 3-D

Fly through your 3-D geologic model in real time. Supports semi-transparent layers, fence diagrams, interactive "cut-aways" and AVI recording/playback.

## CONTOURING

Surface gridding, color contouring, fault Krigging, 2-D and 3-D variogram analysis, surface equation processing and volumetrics.

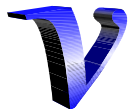
## OPTIONAL MODULES

- MODFLOW/MODPATH Interface
- Sitefx Sample Management System
- Internet Map and Log Server

## PROVEN

Over 10 years of development and refinement.

## SINGLE DATASOURCE HYDROGEOLOGIC DATABASE MANAGEMENT SYSTEM



### VIEWLOG SYSTEMS

Building geoscience software solutions since 1985

71 Cranbrooke Ave., Toronto, ON, Canada M5M 1M3 Tel. 416.481.6287 Fax. 416.481.0069

Web: [www.viewlog.com](http://www.viewlog.com)

Email: [info@viewlog.com](mailto:info@viewlog.com)