

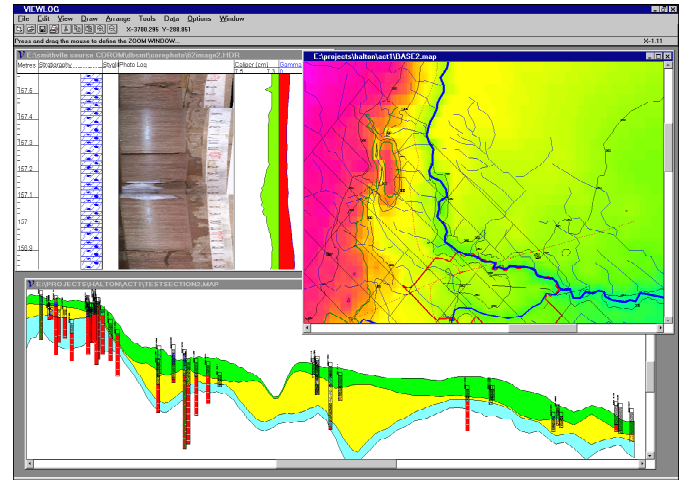
VIEWLOG

GEOLOGIC DATA MANAGEMENT SYSTEM

OVERVIEW:

VIEWLOG for Windows provides a powerful, integrated geologic data management and analysis system.

VIEWLOG includes interactive mapping, cross section, and log editing tools which support key geologic objects such as boreholes, monitors and gridded parameters in a manner which effectively integrates data storage, display and analysis functions.

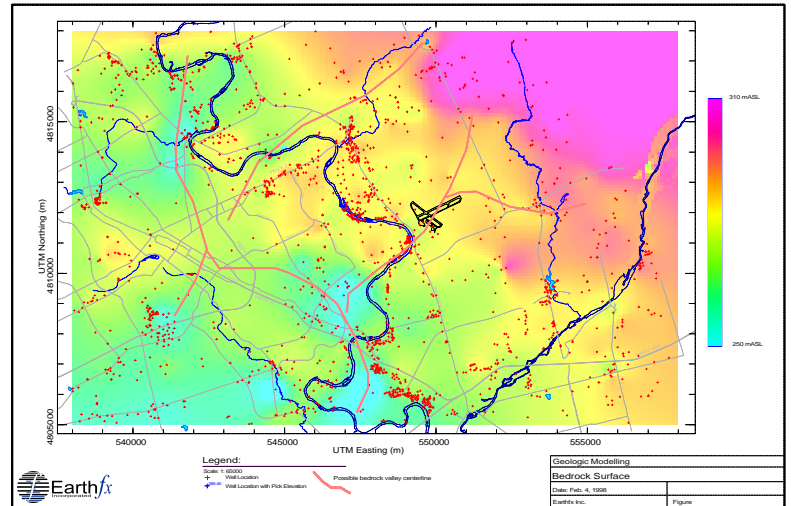


FEATURES:

OPEN DATA-BASE STORAGE

VIEWLOG data storage is built on an open, relational database structure, which can be fully customized by the end user. Both VIEWLOG and the database interface can simultaneously access the data, allowing re-time, interactive query setup and display. The database structure can scale from a single desktop database running Microsoft Access, to a multi-user, multi-database client server design which can include ODBC and ADO connections to MSDE, SQL Server and Oracle.

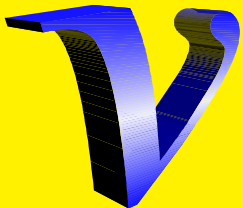
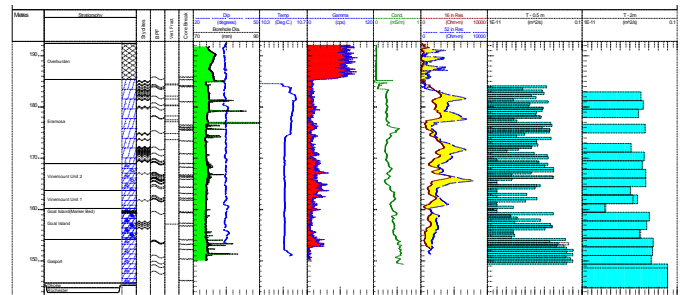
The interactive map editor includes layer based drawing object management and a dual coordinate (Page/World) viewport drawing system. Drawing objects include boreholes, gridded surfaces, geo-referenced air photos, polylines, and true-type text. Powerful object selection and attribute editing functions are included. VIEWLOG provides the geologic processing functions missing from a traditional GIS, and easily transfers information to and from all major GIS and CAD programs.



MAP EDITOR

LOG EDITOR

The VIEWLOG log editor includes functions for editing, display and interpretation of a wide variety of borehole measurements, including geologic description, core photos, lithology symbol columns, well construction, geophysical



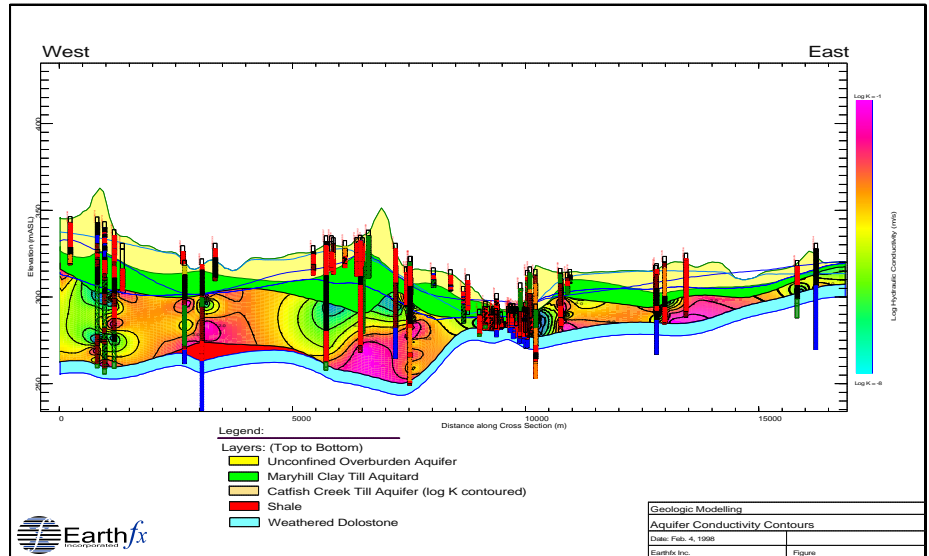
VIEWLOG SYSTEMS

71 Cranbrooke Avenue, Toronto, Ontario, Canada M5M 1M3
 Tel. 416.481.6287 Fax. 416.481.0069
<http://www.viewlog.com> Email: info@viewlog.com

CROSS SECTION EDITOR

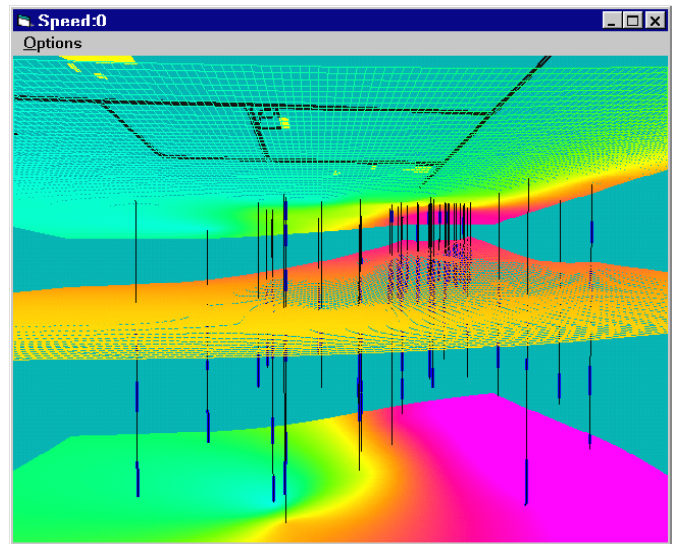
logs (including deviation, full-waveform sonic and BHTV), core measurements and packer tests.

VIEWLOG excels at cross sections! The cross section editor allows interactive formation unit picking and stratigraphic interpretation in a true 3-D coordinate space. Vertical exaggeration and borehole offset projection distance can be changed at any time, even after interpretation. All map editor selection and drawing functions are available on section.



3-D GEOEXPLORER

The 3-D GeoExplorer module can be used to instantly create powerful 3-D OpenGL visualizations and "fly-throughs", completely within the VIEWLOG environment. GeoExplorer provides individual control over layer transparency, a "drill down" function for moving vertically through your model, dynamic control over vertical exaggeration and 3-D viewing of fence diagrams.



GEOSTATISTICS AND GEOLOGIC MODELLING

The geologic model construction functions includes comprehensive geostatistics and variogram analysis, including logarithmic (for contaminant plumes) and fault gridding. The user can easily control and bias the gridding process through control points and grid post processing. Post processing includes volume and grid area calculation functions. Color contouring can be performed on both plan and cross section views.

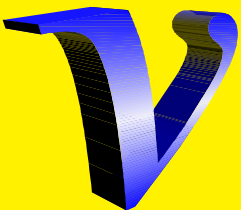
MODFLOW INTERFACE

The ground water modelling interface reads and writes Modflow, Modpath and MT3D model input and output files. Powerful GIS style parameter assignment functions are available for handling complex groundwater/surface water interaction simulations.

ABOUT VIEWLOG SYSTEMS

The Map, Log, Section and 3-D Editors are seamlessly integrated in a single 32 bit MDI (Multiple Document Interface) Windows application, and linked by a Project File Management System. VIEWLOG is compatible Windows 95, 98 and NT4.0.

VIEWLOG Systems has been developing and selling geologic data management software since the first release of VIEWLOG for DOS in 1985.



VIEWLOG SYSTEMS

71 Cranbrooke Avenue, Toronto, Ontario, Canada M5M 1M3
Tel. 416.481.6287 Fax. 416.481.0069
<http://www.viewlog.com> Email: info@viewlog.com