

VIEWLOG

BOREHOLE DATA MANAGEMENT SYSTEM

OVERVIEW:

CORE PHOTOS, CONDUCTIVITY LOGS, CROSS SECTIONS, CONTOURS, ACCESS OR ORACLE - BRING IT TOGETHER IN VIEWLOG

VIEWLOG provides a truly integrated borehole data management and interpretation system. By tightly coupling a powerful borehole data editor with GIS style mapping and cross section tools VIEWLOG offers an unrivalled level of visual interpretation control.

FEATURES:

Borehole Editor
Map Editor
Cross Section Editor
Open Database Structure
Geostatistics and Krigging
Geologic Model Construction

VERSIONS:

VIEWLOG is available in four different versions.

VIEWLOG/LT

BASIC LOG DATA EDITING

Basic geophysical log data editing and plotting. Functions for importing a wide variety of geophysical data types, interactive log editing, processing, interpretation and plotting.

VIEWLOG/LS

FOR THE GEOPHYSICAL LOGGING SPECIALIST

Comprehensive geophysical log processing, with stratigraphic correlation on cross sections. Includes advanced log analysis functions such as cross plotting, Z-Plotting, statistics, Principal Components Analysis, and deviated borehole processing. Handles advanced log types, such as BHTV, full waveform sonic, dipmeter, and core photos. Used by the USGS to produce log sections which span the entire state of Louisiana!

VIEWLOG/DB

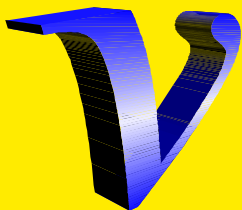
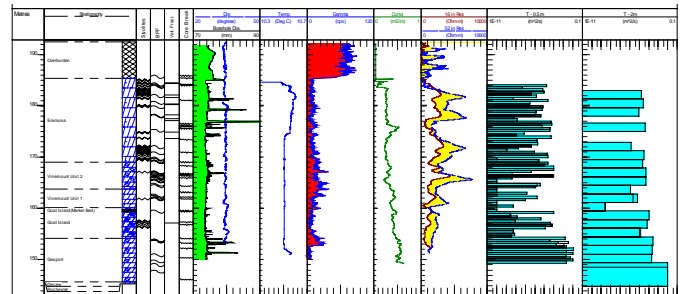
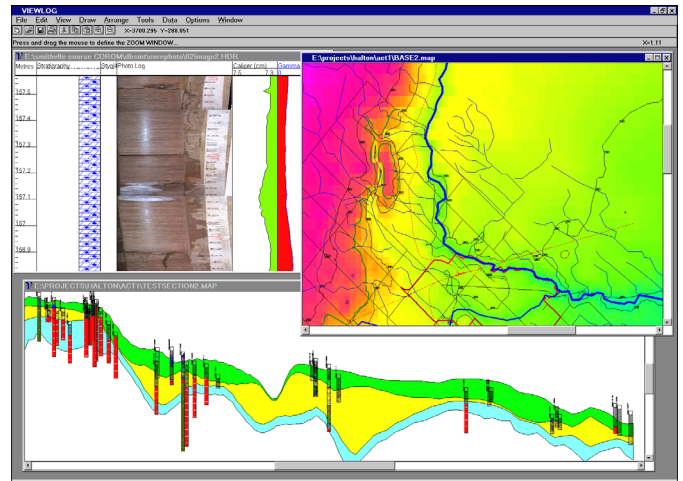
FOR INTEGRATED GEOLOGIC DATABASE MANAGEMENT AND MODELLING

Integrated geologic and geophysical database management. Designed to allow meaningful, intense graphical interaction with the borehole information. Includes: Note: VIEWLOG/DB does not include the advanced geophysical log analysis modules included in VIEWLOG/LS.

VIEWLOG/PRO

COMPREHENSIVE GEOPHYSICAL DATA PROCESSING AND INTERPRETATION

Advanced geologic and geophysical data processing and modelling. Includes all of the advanced geophysical data processing functions in VIEWLOG/LS, coupled with the database and geologic modelling functions in VIEWLOG/DB.



VIEWLOG SYSTEMS

71 Cranbrooke Avenue, Toronto, Ontario, Canada M5M 1M3

Tel. 416.481.6287 Fax. 416.481.0069

<http://www.viewlog.com> Email: info@viewlog.com

VIEWLOG

MAP AND CROSS SECTION EDITOR

The integrated VIEWLOG mapping tools combine the key features of CAD, GIS and image display tools into a single integrated tool designed for the geosciences. The most important aspect of the map editor is that many key objects are managed as high level intelligent "geo-objects", with extended properties and integrated analysis functions. These geo-objects include:

GEO- OBJECTS:

BOREHOLE DATA SOURCES

- Boreholes are grouped and managed as comprehensive, detailed, 3-d objects. Double-click to edit a well!
- All borehole details are dynamically drawn from any open format ACCESS, Oracle or ODBC database. All database access is non-exclusive, so you can work in the database, then flip to VIEWLOG to see query results.
- Includes intelligent well data posting, with detailed options for both plan view and section display.

PARAMETER DATA SETS:

- Parameter sets are used to organize and manage geologic properties, including layer surfaces, geologic units, water levels, and rock properties.
- Parameters can be posted, interpolated to a grid, edited, and contoured (in either on plan or cross section).

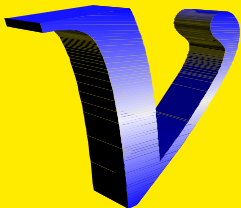
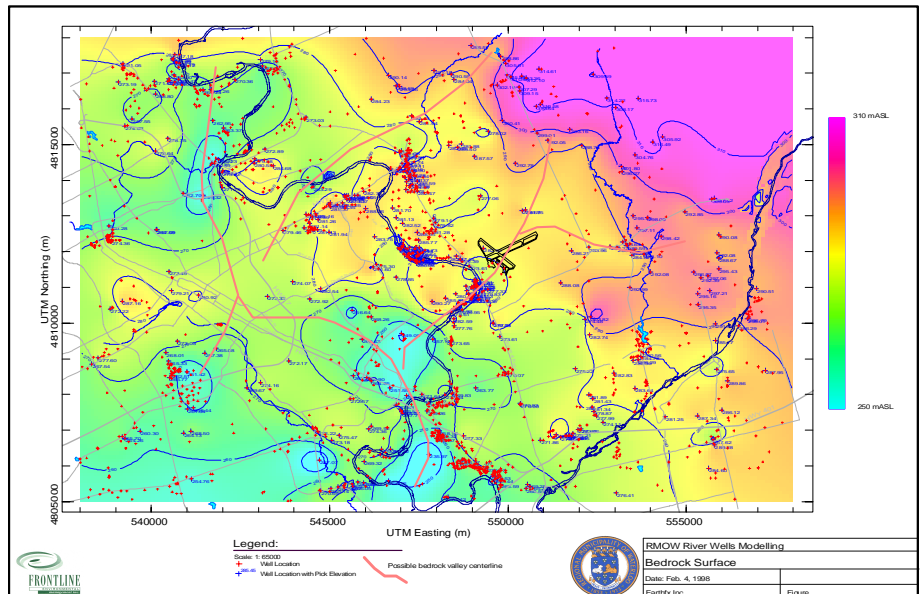
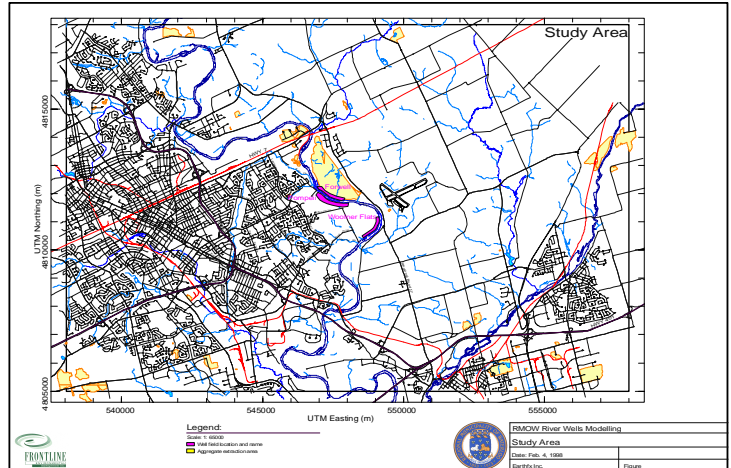
GRIDS:

- Define one or more grids. Use a coarse regional grid for large scale work, then define a smaller detailed grid for site interpretation.
- Irregular cell sizes can be used for detailed refinement in areas of interest (MODFLOW compatible).

OTHER FEATURES:

MULTI-LAYER DRAWING OR- GANIZATION:

- Organize drawing objects into layers which can be frozen or hidden.



VIEWLOG SYSTEMS

71 Cranbrooke Avenue, Toronto, Ontario, Canada M5M 1M3
 Tel. 416.481.6287 Fax. 416.481.0069
<http://www.viewlog.com> Email: info@viewlog.com

Select and work with objects as a layer group. Use the Arrange functions to control drawing order of objects within a layer

MULTI-WINDOW MDI DISPLAY:

- Open multiple maps and cross sections simultaneously, and cut and paste objects between map windows.

DUAL COORDINATE DRAWING SYSTEM:

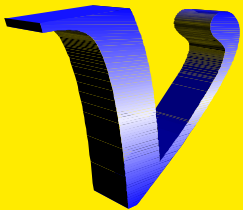
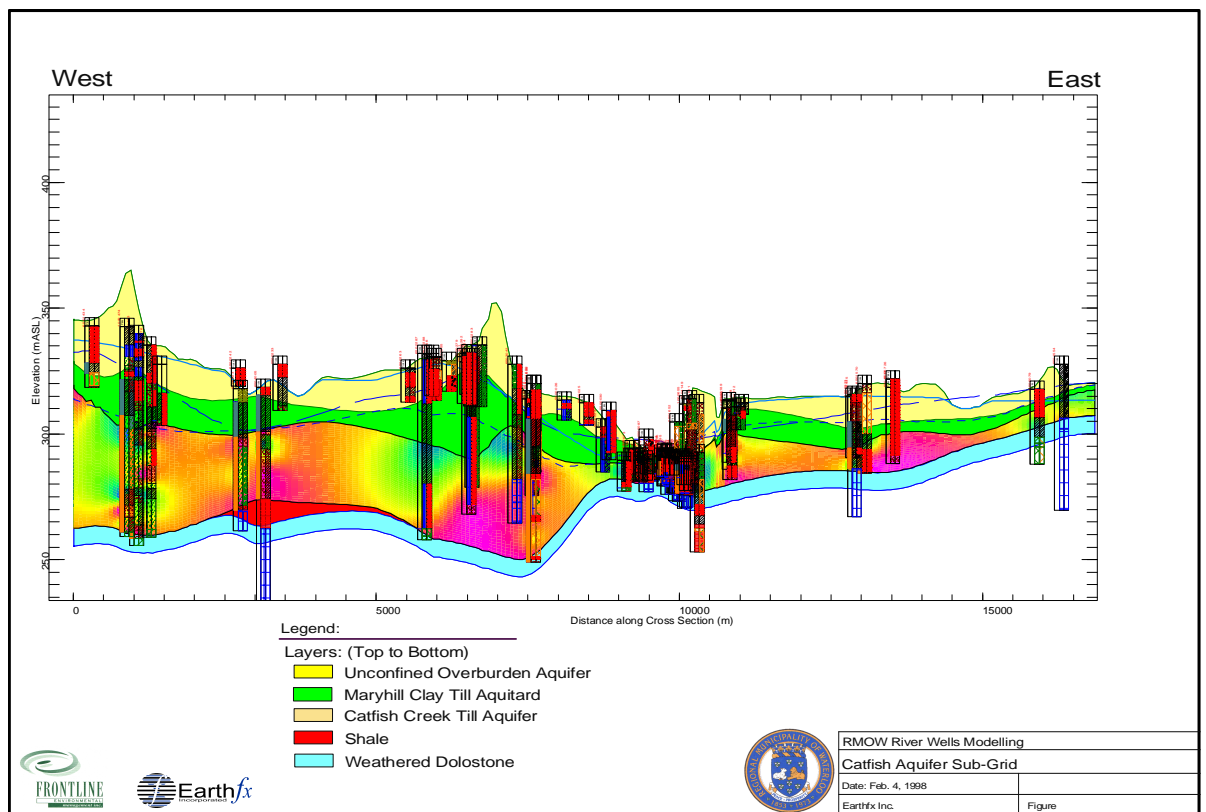
- Perform analysis and interpretation in World coordinates, then define a scaled clipping viewport and add a border and logo in Page units.

FILE IMPORT/EXPORT:

- Import/Export of Autocad DXF files, including 3-D information (layers and attributes preserved)
- Import of Arcview Shape files and Mapinfo MIF files
- Embed multiple scaled WMF, EMF, BMP, GIF, JPG, or RLE images anywhere on a map or section

OBJECT SELECTION AND EDITING:

- Object Selection by Window, Layer, Polygon, Proximity, or Attribute
- Individual and group editing of object properties, shifting, and rescaling
- Polyline node editing, trimming, and linking



VIEWLOG SYSTEMS

71 Cranbrooke Avenue, Toronto, Ontario, Canada M5M 1M3

Tel. 416.481.6287 Fax. 416.481.0069

<http://www.viewlog.com> Email: info@viewlog.com

VIEWLOG

LOG EDITOR

**DISPLAY
AND
EDITING**

POWERFUL LOG EDITING FEATURES:

Functions for stretching, smoothing, trimming, resampling, averaging and linking logs. Edit data point by point, if necessary.

COMPLETE DATA DISPLAY CONTROL:

All aspects of the log display and scaling are under user control. Log format templates can be used to standardize the appearance of logs.

ANALYSIS:

LITHOLOGIC INTERPRETATION:

Create multiple columns of contact lines and text interpretation for display along side the logs. Draw custom symbols and assign each to a keyword which, when it appears in the text description, causes the symbol to be drawn in the lithology column.

LOG CALCULATIONS:

Enter any user defined log processing equation to generate new or corrected logs. Support for a wide variety of mathematical functions (sin, cos, tan, abs, etc.), including conditional statements (if-then-else) and logical operators (and, or, not). Equations can even be applied to a limited depth interval to correct only portions of a log.

FLEXIBLE CROSS PLOTTING:

Cross Plot any two logs, with any combination of linear or logarithmic scaling. Identify depth intervals on the logs by either drawing polygons on the cross plot or, alternatively, pre-defined contact intervals. Data from each contact interval is drawn with different symbols on the cross plot.

POWERFUL Z-PLOTS:

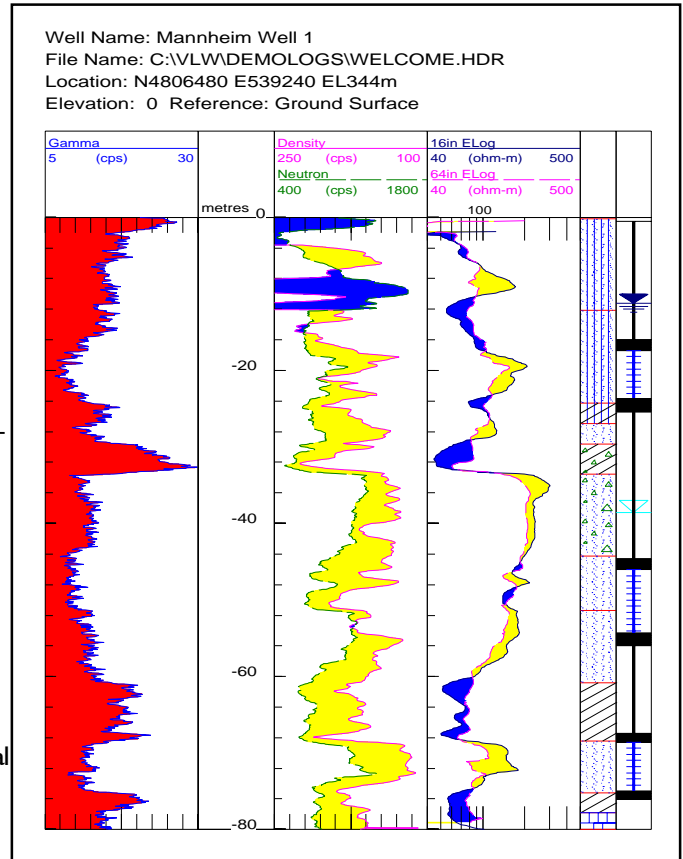
Select a third log for classifying the symbols on a plot, thus creating a Z-Plot. Use symbols or numbers to identify the Z-log value, and combine it with polygons to identify depth intervals.

STATISTICS:

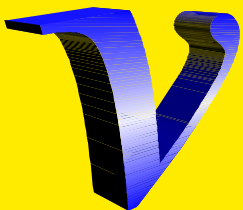
Calculate detailed log statistics on any portion of a log with the click of the mouse. All statistical results appear in a grid window which can be copied to the Clipboard, and then pasted into any other Windows application.

CORRELATION MATRIX AND PRINCIPAL COMPONENTS ANALYSIS (PCA):

Calculate the correlation matrix for any combination of logs, and, with the click of a button, calculate the matrix



**INPUT/
OUTPUT:**



VIEWLOG SYSTEMS

71 Cranbrooke Avenue, Toronto, Ontario, Canada M5M 1M3

Tel. 416.481.6287 Fax. 416.481.0069

<http://www.viewlog.com> Email: info@viewlog.com

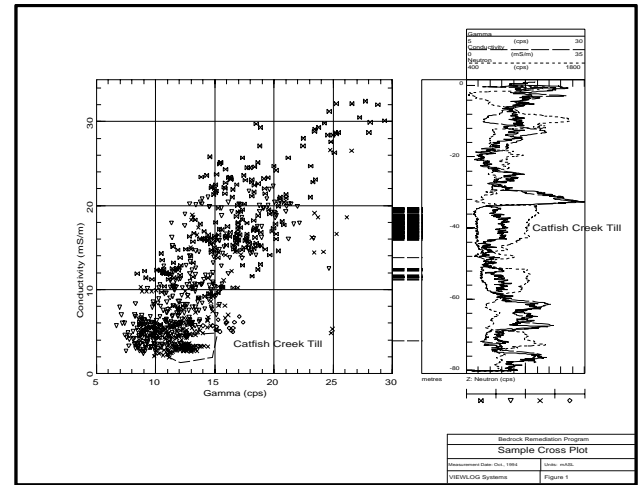
eigenvalues, eigenvectors and PCA score logs. Analysis of the PCA score logs can help you understand the underlying physical properties that are influencing a suite of log measurements.

INTEGRATED SUPPORT FOR ALL MAJOR LOGGING DATA FORMATS:

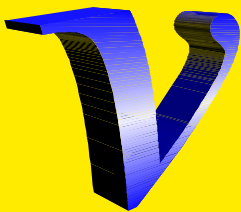
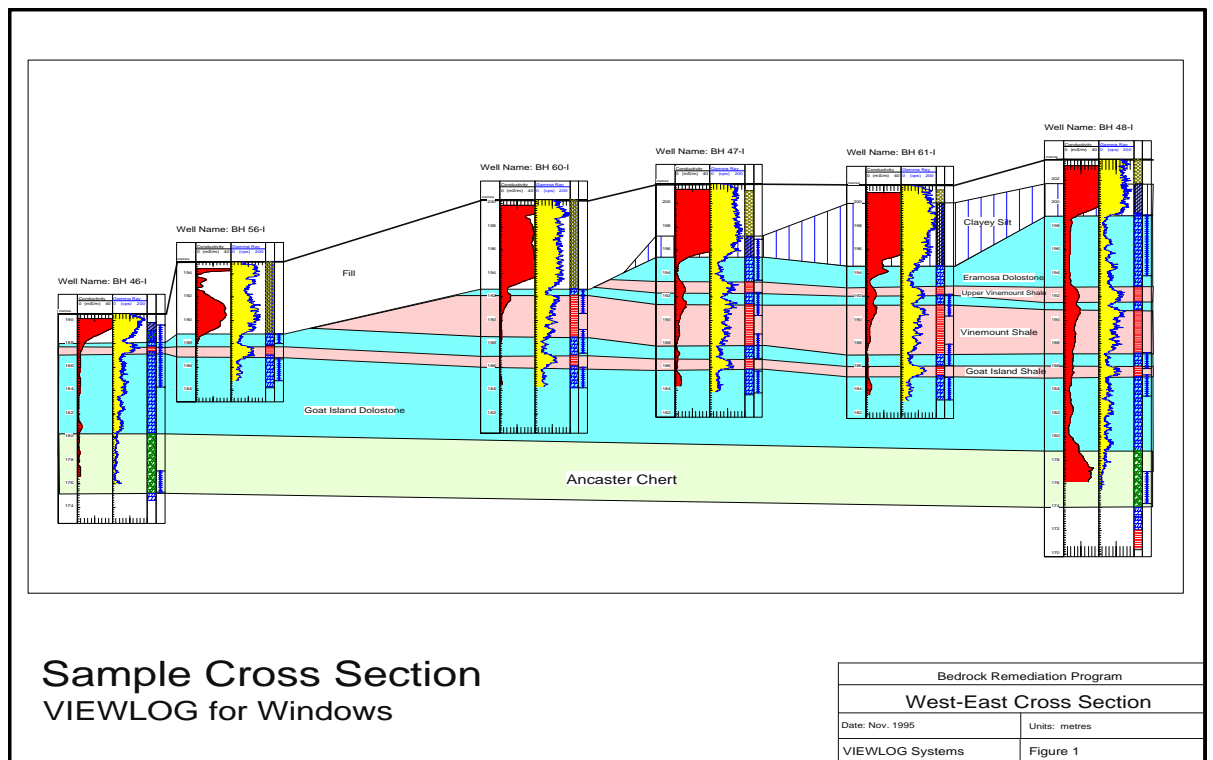
Support for Log ASCII Standard (LAS), Auslog, generic ASCII, Lotus 123, Mt. Sopris, Robertson, OYO, OYO-RG, Geonics, Century and SMS log file formats. All formats can be loaded directly from within the main program.

PRINT PREVIEW AND DRAWING EDITOR:

All output passes through the integrated preview and drawing function. Re-format your logs in Preview mode, then switch to the drawing editor to add your company logo, mark up the output with additional lines, boxes and text.



A sample cross plot created by VIEWLOG for Windows. Any combination of logs can be cross plotted and the border and text labels can be customized using the integrated Drawing Editor.



VIEWLOG SYSTEMS

71 Cranbrooke Avenue, Toronto, Ontario, Canada M5M 1M3
 Tel. 416.481.6287 Fax. 416.481.0069
<http://www.viewlog.com> Email: info@viewlog.com