

SiteFX

Software for
database
management

Applications

- Regional Groundwater Management
- Contaminated Site Investigations
- Waste Management Facilities
- Groundwater Supply Systems
- Regulatory Reporting

Benefits

- Immediate Access to Data
- Validation Tools for Data Integrity
- Enhances Use of Data
- Builds Greater Confidence in Data
- Effective Data Storage with Proven Data Model

Streamline Data Management Tasks

SiteFX is geo-science data management software. It provides the interface onto your data, with tools to efficiently load, manage, verify and present hydrogeological data from multiple sites. It is designed with the goal of streamlining data management, particularly for large data sets, thereby ensuring data integrity and offering a competitive advantage. It serves as an interface onto the data, simplifying the tasks of entering new data, validating existing data and retrieving data for reporting and graphing. Users do not require advanced database skills, nor are they required to fully understand the underlying database.

When combined with the EarthFX data model, SiteFX offers a powerful data management system, enforcing data and business rules, preserving the integrity of the data with security features, yet empowering the user with intuitive tools to analyze and manage the data.

SiteFX offers over 50 on-screen forms and functions to automate and expedite entering new data, verifying existing data and producing reports and graphs. Forms include:

Data Entry

- Add New wells, boreholes, monitoring intervals
- Add Geological descriptions
- Add Water levels, as single readings or entire files
- Add Pumping volumes, as single readings or entire files
- Water quality, as single readings or entire files
- Add Laboratories / analytical packages
- Add Chemical parameters and regulatory criteria
- Build Routine Sampling schedules

Data Management

- Full data verification
- Sample reconciliation
- Measurement unit harmonisation
- Parameter name harmonization
- Depth checking

Data Reporting

- Powerful data selection tools
- Multi-axis / multi-parameter graphing (fully customizable)
- Compliance / exceedance reports (fully customizable)
- Quality control sample analysis

System Utilities

- Database compaction utilities
- Database compare, update, copy and other functions
- On-line help system
- New user / privilege management

Add Data

Add New Boreholes

Features

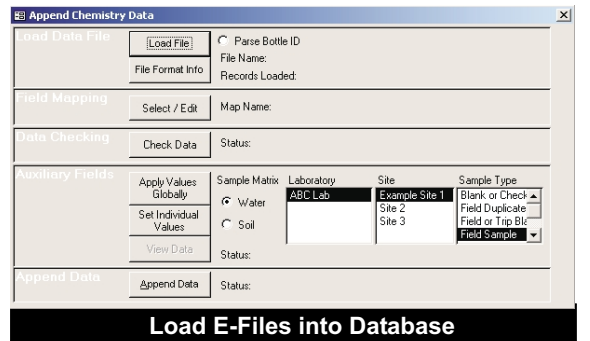
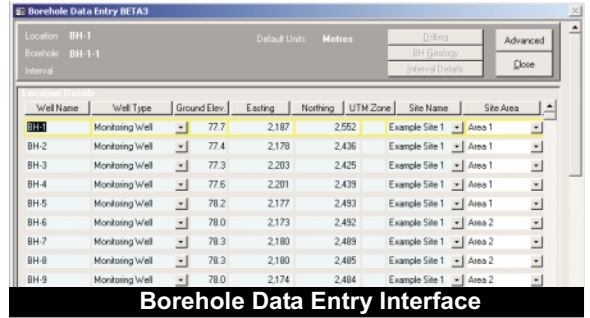
- Spreadsheet look and feel
- Drop-down lists to expedite data entry and maximize QA
- Built-in error checking

Add Data For

- Boreholes (pumping wells, monitoring wells etc)
- Screened intervals / survey data
- Well construction details
- Geology
- Linked files (such as PDF of well log)

Append Data Files

- Load electronic data files of laboratory data
- Build and save templates for different laboratories
- Built in error checking



View Data

Search and Display Data

Features

- Search by site, well, date, sample, parameter
- Filter using regulatory criteria
- Save settings for routine reports
- Compare QA samples

Display As

- Borehole logs
- Exceedance reports
 - MOE Quarterly Report
 - General Exceedance Report
- Graphs, with powerful zooming and formatting control
- On-screen spreadsheets (clip into other applications)
- Save as HTML file, spreadsheet

