

VIEWLOG/WEBSERVER

VIEWLOG Systems is pleased to announce the release of the VIEWLOG/WebServer web data management system.

<http://www.viewlog.com/webserver/viewlog.asp>

OVERVIEW

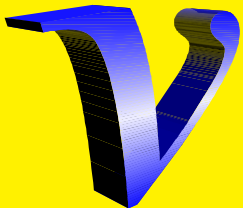
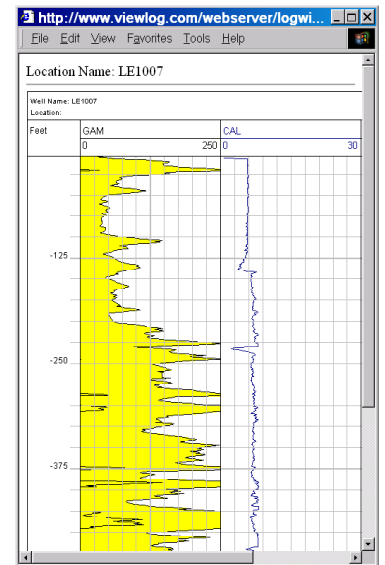
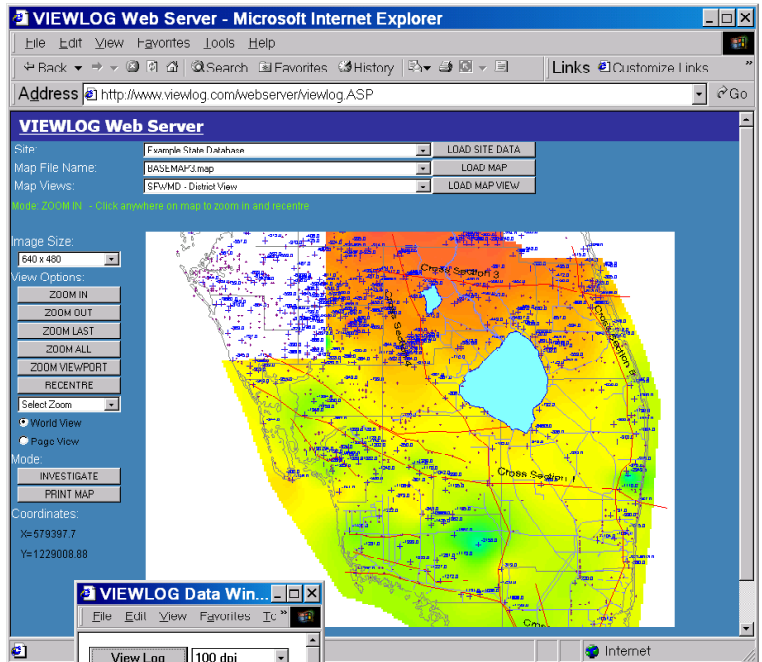
Sharing information is critical to the success of your projects:

- Project team members need access to the data as it comes in from the field
- Technical reviewers need access to key site details
- Project managers need to be able to track progress at any time and from any location
- Clients demand to be kept informed

VIEWLOG/WebServer addresses these needs with a powerful, yet simple to administer, system for sharing maps, cross sections and borehole logs through any web browser on your intranet or internet.

GEOLOGIC DATA: ANYWHERE, ANYTIME

- **More than just maps:** VIEWLOG provides more than just well location maps, but online geologic information, including full color contour maps, water levels, contaminant plumes, air photos, etc.
- **Clickable Cross Sections:** Cross sections are generated in real-time by slicing the geologic model. Click on maps or cross sections to access detailed borehole log data.
- **Rich Well Log Data:** Access any and all available well log data types, including core description, lithology columns, geophysical logs, packer test results, well construction, core photos, etc.
- **Report Quality Log Output:** Web users can control image quality, allowing access to report quality borehole logs. Logs can be locally printed or pasted into other applications.
- **Easy to use:** A simple web interface coupled with full support for VIEWLOG Map Views ("snapshots") means that web clients can quickly jump to key information in the project. Data access is performed in a fast yet powerful two-tier request system: the first map click provides well header information, while the second click allows access to the full geologic well log report.
- **All the data, and always up to date:** VIEWLOG Server works directly from any VIEWLOG project file, without any changes. All maps, logs and cross section web pages are generated in directly from the geologic database. Projects can be shared in real-time with regular copies of VIEWLOG running on network workstations. Direct database mapping and shared access ensures that the latest, most complete, data is always available at your web site.

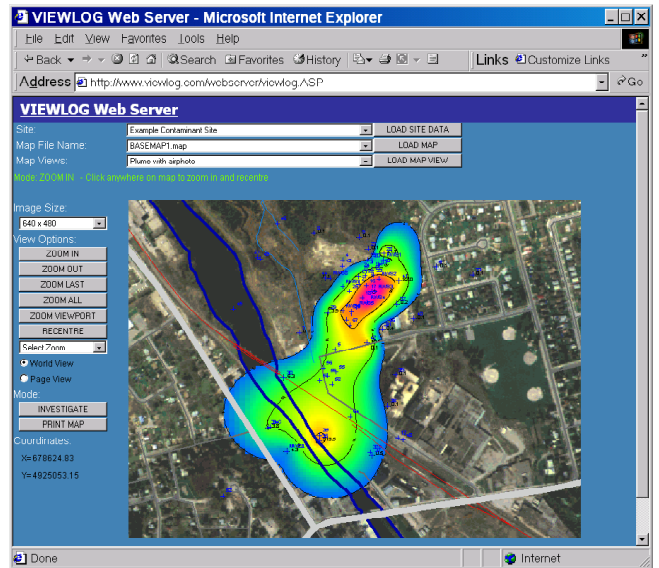


VIEWLOG SYSTEMS

3363 Yonge Str., Toronto, Ontario, Canada M4N 2M6
Tel. 416.481.6287 Fax. 416.481.0069
<http://www.viewlog.com> Email: info@viewlog.com

SERVER FEATURES:

- **Zero Web Administration:** Once installed, you can add or remove data or projects without any changes to the web server.
- **Web browser independent:** Pure HTML means nothing to download (and nothing to install) on the web client machine. This increases both performance and security. Works with or behind any firewall.
- **Flexible:** Run multiple projects on the same web server. This allows some projects to be made available in a secure manner over the public internet, while others can remain hidden behind the firewall (intranet).
- **High performance:** Web client performance is independent of project size, and database can exceed 100,000 boreholes. Full support for multi-processor servers and server clusters.
- **Extensible:** VIEWLOG/WebServer is designed so that the webmaster can customize the response to a map or cross section position click. This allows links to custom web pages or other web databases.
- **Fast installation:** Put any VIEWLOG project (including all maps, logs and cross sections) on the web in less than 5 minutes. Simply copy to the files into a directory and then add a directory pointer to the VIEWLOG/WebServer control file.



APPLICATIONS:

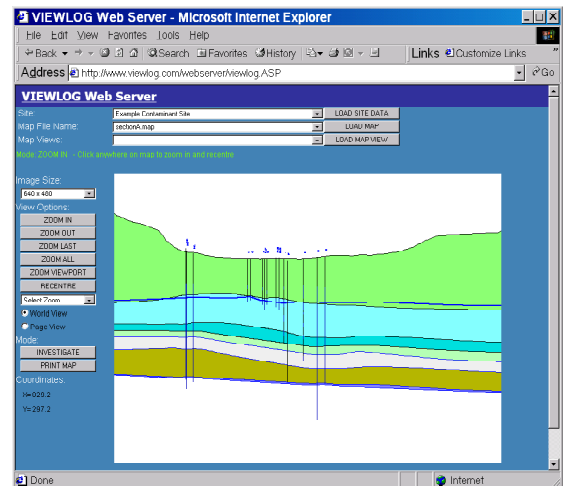
TYPICAL APPLICATIONS

- In-house project data sharing: Share project data with other members of your project team.
- Client access to data: Provide clients with access to project data as the project unfolds.
- Government data servers: Provide end user access to vast stores of geologic information. VIEWLOG/WebServer has been proven with state-wide databases containing more than 100,000 wells.

VERSIONS:

VIEWLOG/WebServer is available as follows:

- VIEWLOG/Personal Web Server
- VIEWLOG/WebServer Professional
- VIEWLOG/WebServer Enterprise



HOSTING SERVICE:

As an alternative to purchase, or to try the system, VIEWLOG/Earthfx can securely host your data on a project by project basis for a low monthly fee. With our hosting service, Earthfx provides you with secure FTP upload and Web access accounts.

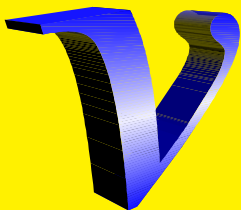
REQUIREMENTS:

VIEWLOG/WebServer is supported on Microsoft Internet Information Server (IIS Version 4.0 or later) and Microsoft Personal Web Server (PWS). Both IIS and PWS are available free from Microsoft. All Microsoft operating systems are supported. Single and multi-processor configurations are available.

PRICE:

VIEWLOG/WebServer is available in professional and enterprise configurations. Prices start at less than \$US 5000. Please call about current pricing. (Price subject to change without notice.).

Chosen by the US Geological Survey (Sept. 2001.)



VIEWLOG SYSTEMS

3363 Yonge Str., Toronto, Ontario, Canada M4N 2M6
Tel. 416.481.6287 Fax. 416.481.0069
<http://www.viewlog.com> Email: info@viewlog.com